



An Axis company

# 2N® EasyGate PRO UMTS



## GSM gateway instead of a landline

The 2N® EasyGate PRO UMTS is a single-channel UMTS gateway that can be used to completely replace a landline via the mobile network, wherever there are no installed cables.

The gateway enables calls to all networks via the UMTS network, high-speed data connection and transmission of text messages. The 2N® EasyGate PRO UMTS can be remotely detected and configured via the mobile network. Moreover the gateway has advanced functions, such as a backup power supply in the event of a power failure.



- **USB connector**
- **Mobile signal indicator**
- **Internal power backup**
- **SMS warning**

### Features:

- Calls via GSM and UMTS
- High-speed data connection via UMTS
- Remote configuration and supervision
- Concurrent call and data connection via UMTS
- SMS warning of battery status
- Option of backup power

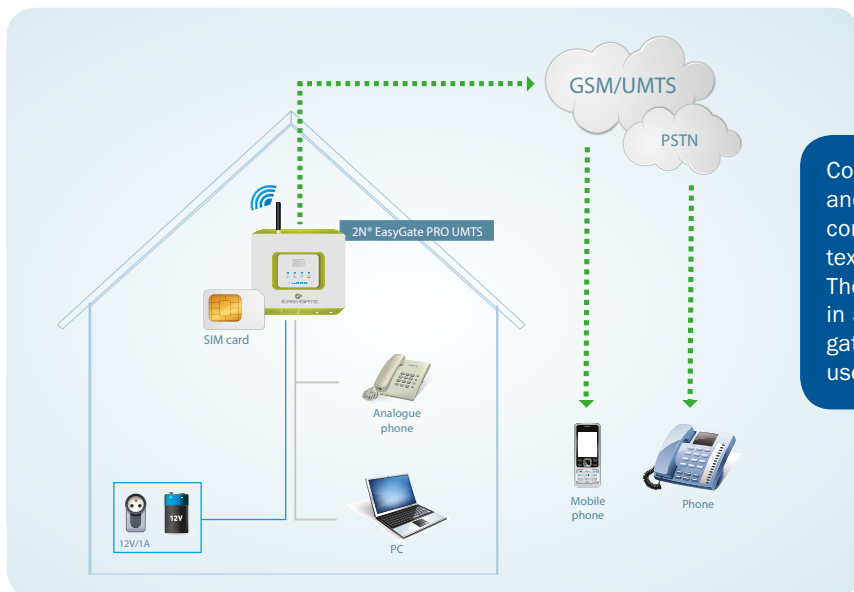
### Advantages:

- Reduction in costs
- Replacement of landline
- High-speed internet connection

### Intended for:

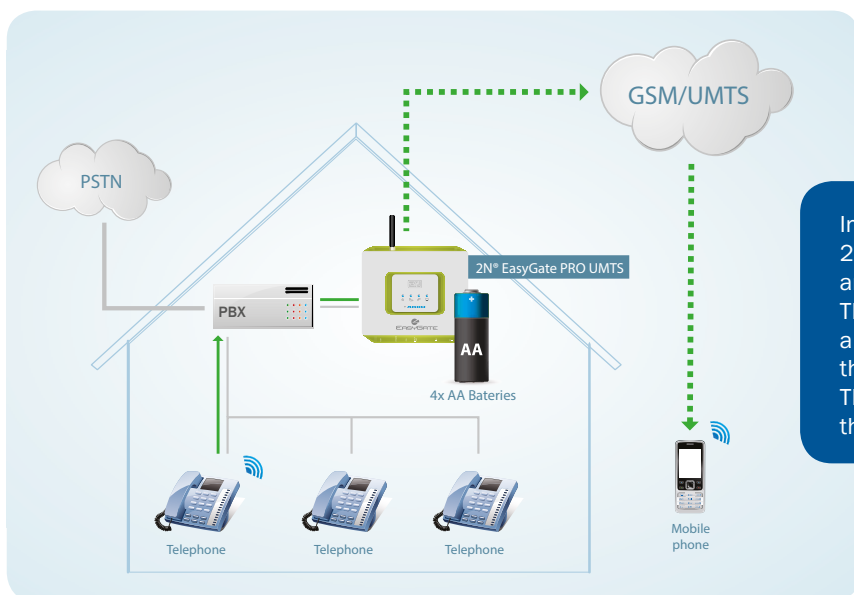
- Small firms with up to 40 employees
- Home offices
- Lift installers

## Replacement of landline



Connect an analogue telephone or PBX and start making calls. With a connected computer, you can also receive and send text messages or browse the internet. The 2N® EasyGate PRO UMTS can be used in areas where there is no landline, or the gateway can provide an alternative for users who no longer want to use a landline.

## Cost savings



In this scenario, the firm connects the 2N® EasyGate PRO UMTS gateway via an analogue interface to its existing PBX. The exchange identifies a call to a mobile number and routes the call via the 2N® EasyGate PRO UMTS gateway. The gateway is accessible to all users of the exchange.

## Technical parameters

<b>GSM/UMTS interface</b>	
GSM	850/900/1800/1900 MHz
UMTS	900/2100 MHz (EU version) 850/1900 MHz (US version) 850/2100 Mhz (JP version)
DATA	HSDPA 3,6 Mbps, WCDMA, EDGE, GPRS
SIM card	3V and 1,8V
<b>Telephone interface</b>	
FXS line	For telephone, PBX CO line
Dialling	Tone (DTMF) and pulse
Caller ID	Transmission of number via FSK
<b>Power supply</b>	
Power adapter supplied with gateway (12V/1A)	
Option of power supply from external source 10 to 16V DC	
Integrated backup AA rechargeable battery (optional)	
<b>Data interface</b>	
Configuration and upgrade using the 2N® PC Manager Uni tool	

